

2022 School Statistics Analysis Report

The Lutheran Church – Missouri Synod
Office of National Mission, School Ministry Department &
Office of Rosters, Statistics, and Research Services

July 27, 2022



Data Sets and Disclaimers

- The following statistical analysis comes from data reported on the 2021-2022 *Early Childhood and School Statistical Report* and from official school data submitted to the LCMS Office of Rosters and Statistics.
- Data from the *Early Childhood and School Statistical Report* represents a 73% submission rate from Lutheran schools and does not include the 27% which chose not to submit their data.
- From 2018-2019 forward, school “Type” is now collected by individual grade level, not by “EC, EL, or HS” groupings. As such, data related to “Schools by Type” now indicate the number of schools indicating they contain these grade levels.
- Data related to “Schools by Size” contain all current schools and their most recently reported enrollment numbers.

Statistics and Demographics



Schools by Type

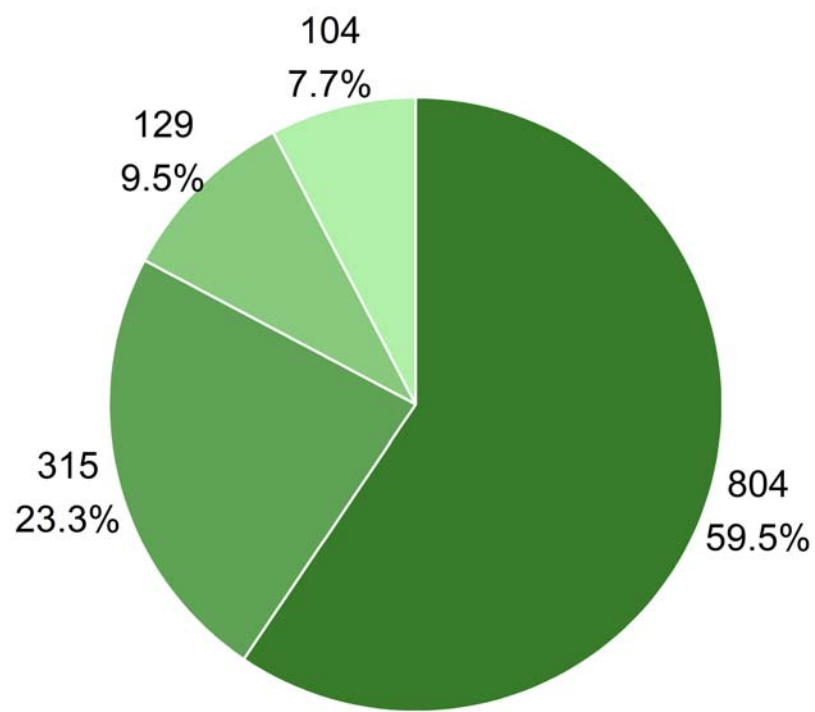
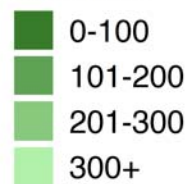
Total Number of Schools	Early Childhood	Elementary Schools (K-8)	High Schools (9-12)
1,855	1,714	730	99

** The number of schools listed in each section represents schools that have indicated that they contain grade levels in the indicated area and as such may be counted in multiple sections.*

Schools by Size

Reporting: 1,352

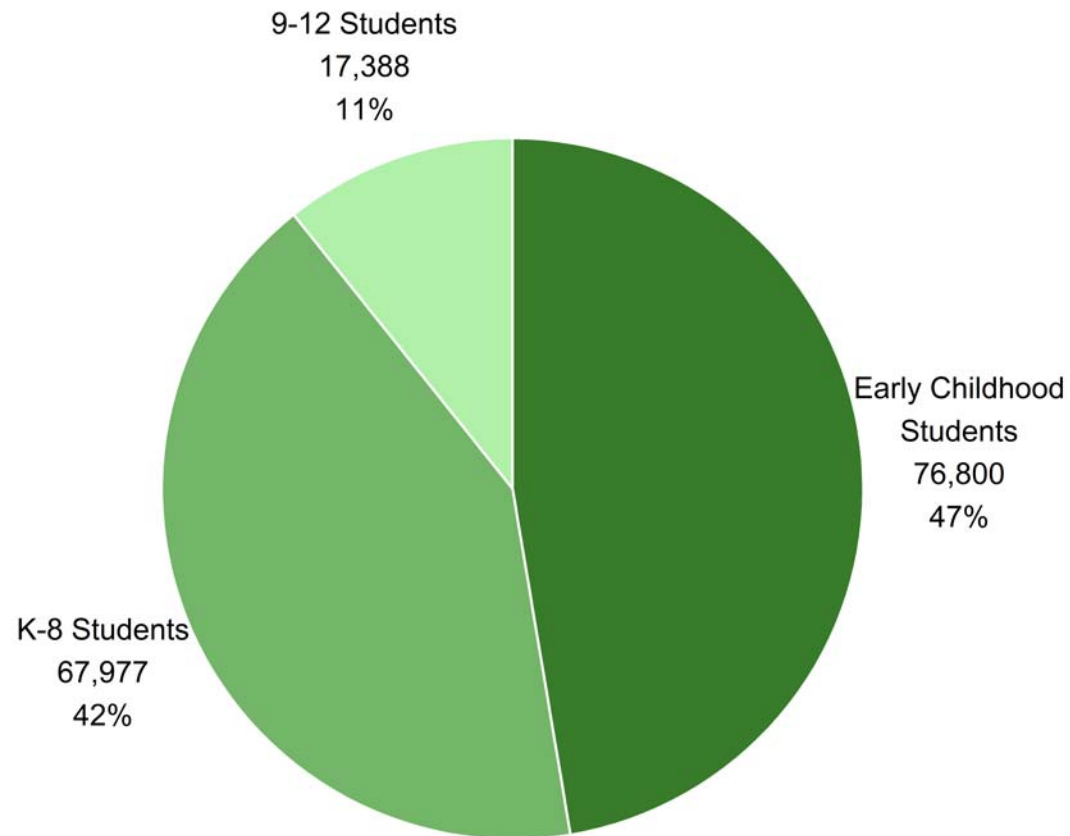
Enrollment



	#	pct
0-100	804	59.5%
101-200	315	23.3%
201-300	129	9.5%
301-400	49	3.6%
401-500	25	1.8%
501-600	16	1.2%
601-700	5	<1%
701-800	3	<1%
801-900	3	<1%
901-1000	1	<1%
1000+	2	<1%

Students by Grade

Total Students: 162,074



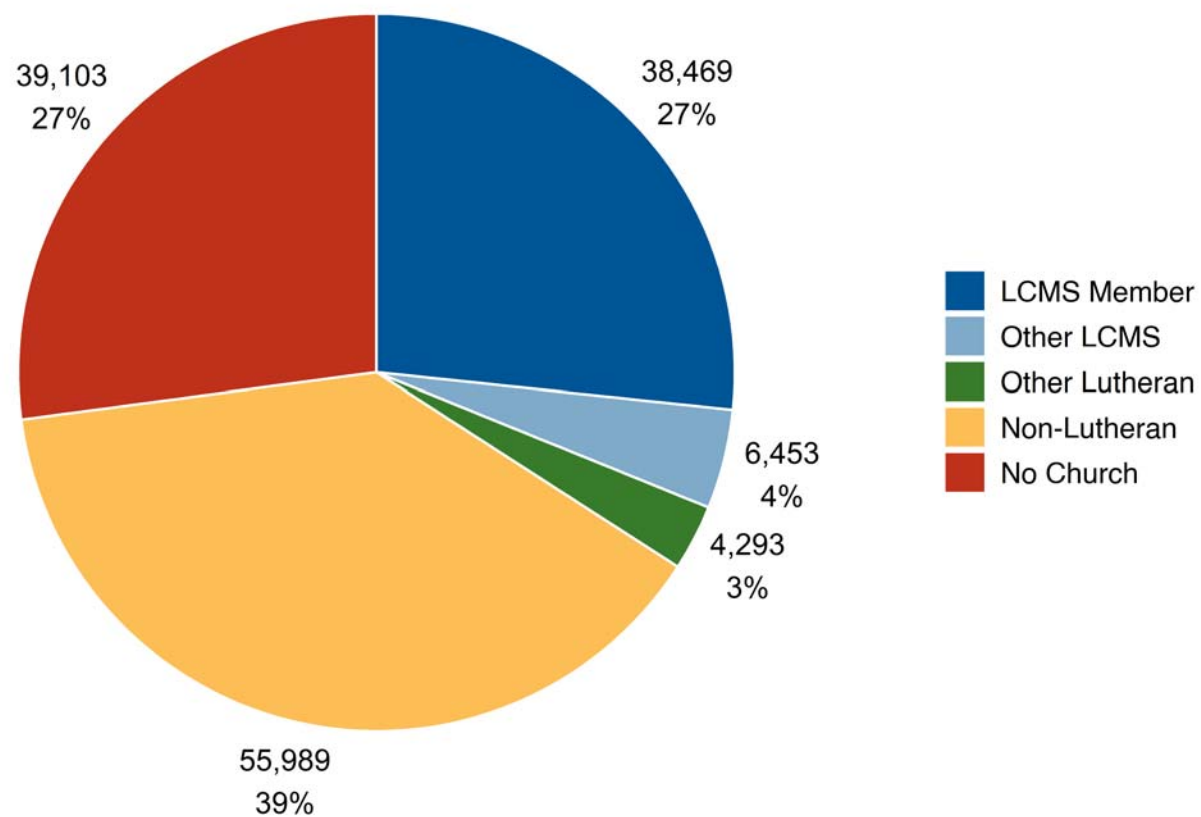
Student Demographics: Ethnicity

Ethnicity Reported: 155,217

	Asian	Black or African American	Hispanic or Latino	Native American	Native Hawaiian or Pacific Islander	White	Two or More Races	Other
Number of Students	6,301	10,700	9,165	718	584	115,898	9,222	2,629
Percentage of Enrollment	4%	7%	6%	<1%	<1%	75%	6%	2%

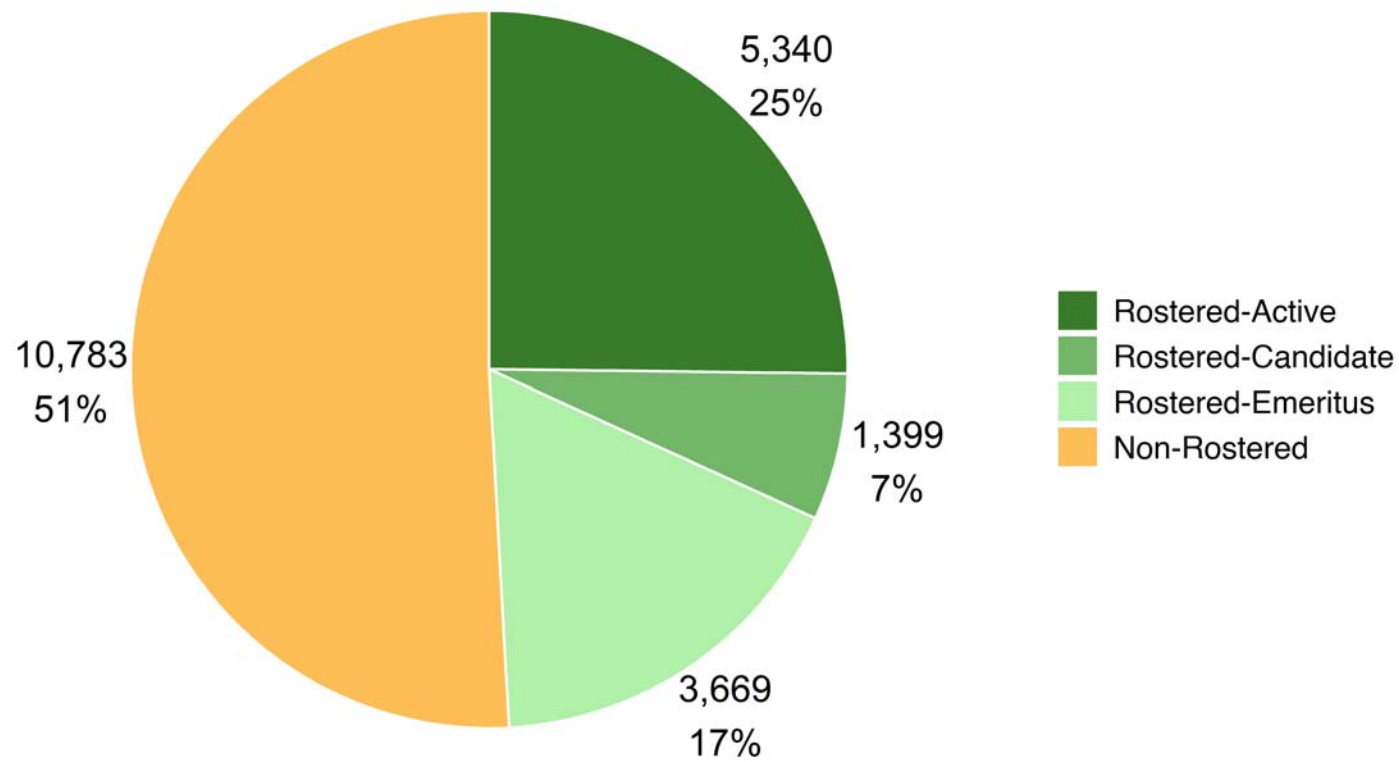
Student Demographics: Church Membership

Membership Reported: 144,307



Current Educators

Total Educators: 21,191

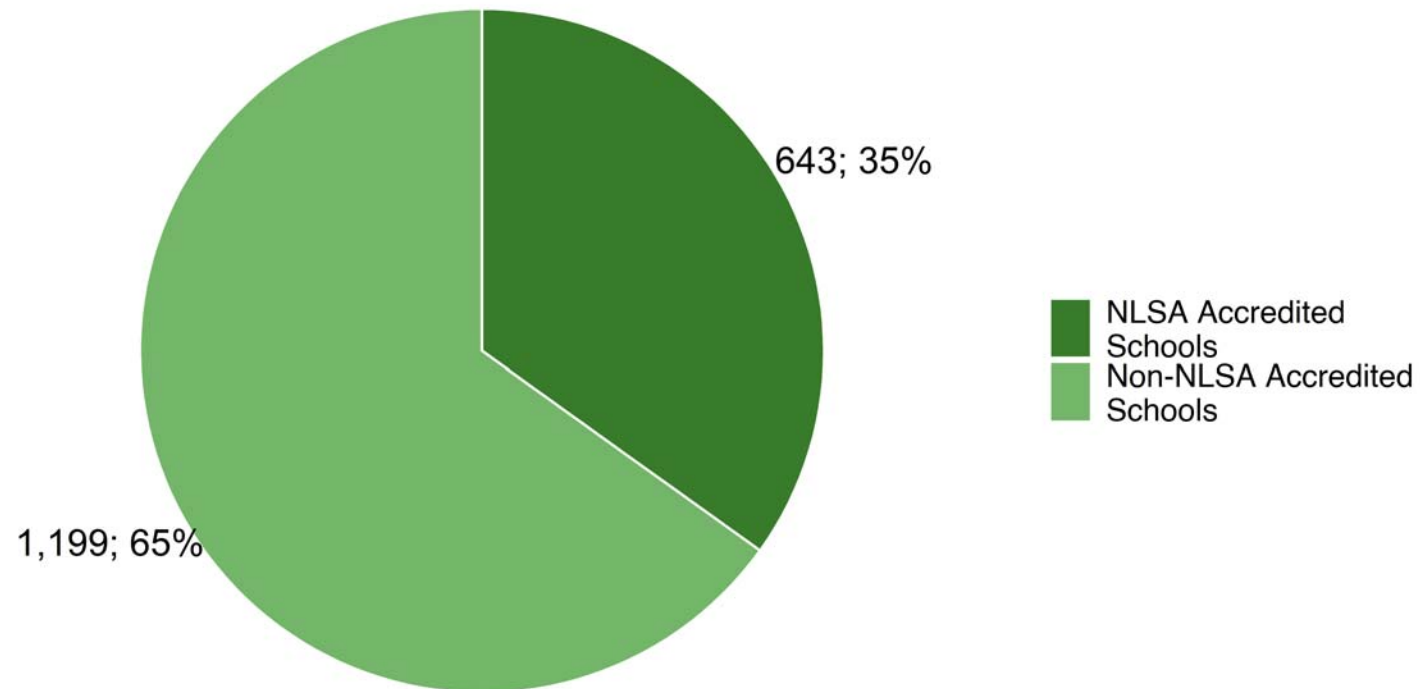


School Funding Support

Congregational Support	Tuition and Fees	Other Sources
20%	70%	10%

** Note: These numbers represent an average of overall percentages submitted by schools for each individual response (as they are an average of an average, they may not always perfectly total 100%).*

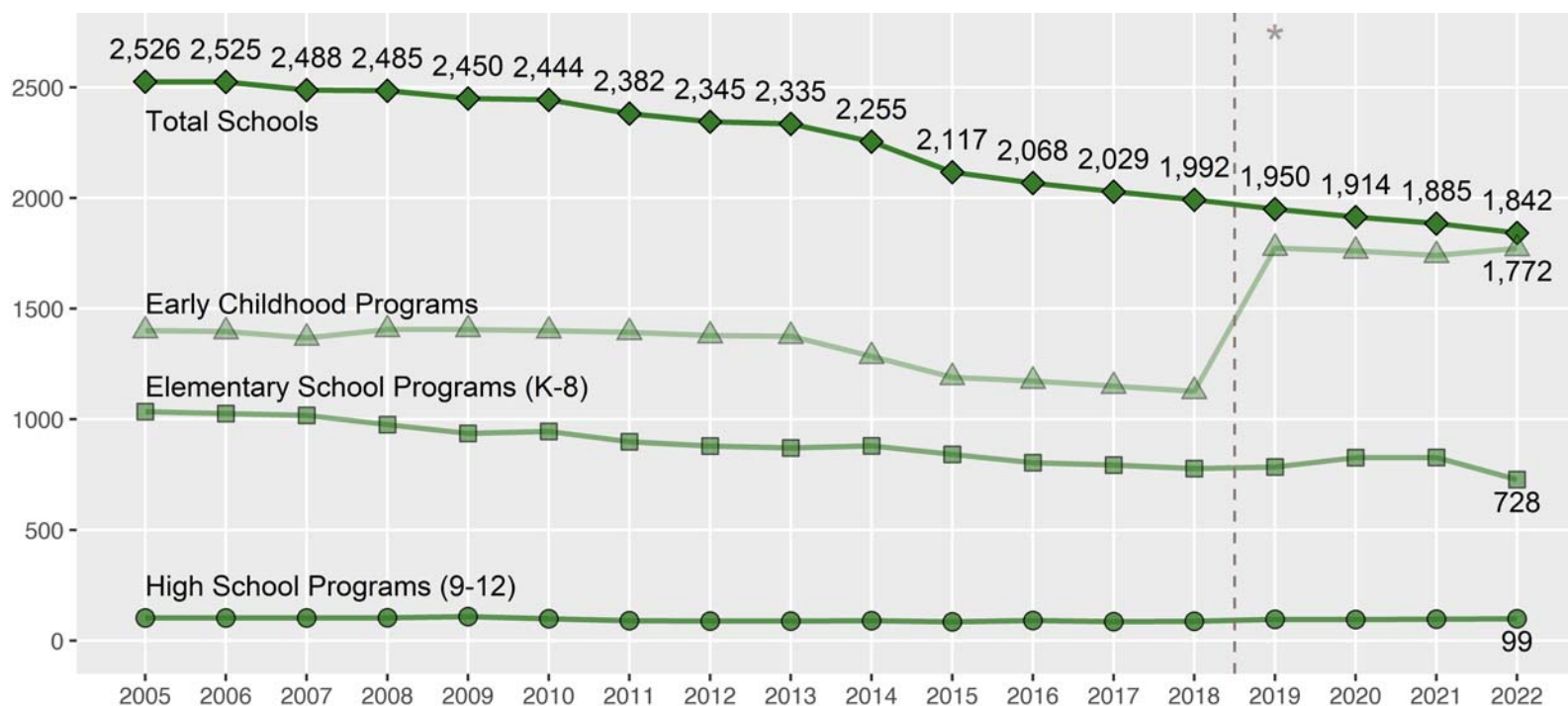
Current NLSA Schools



Statistical Trends Over Time



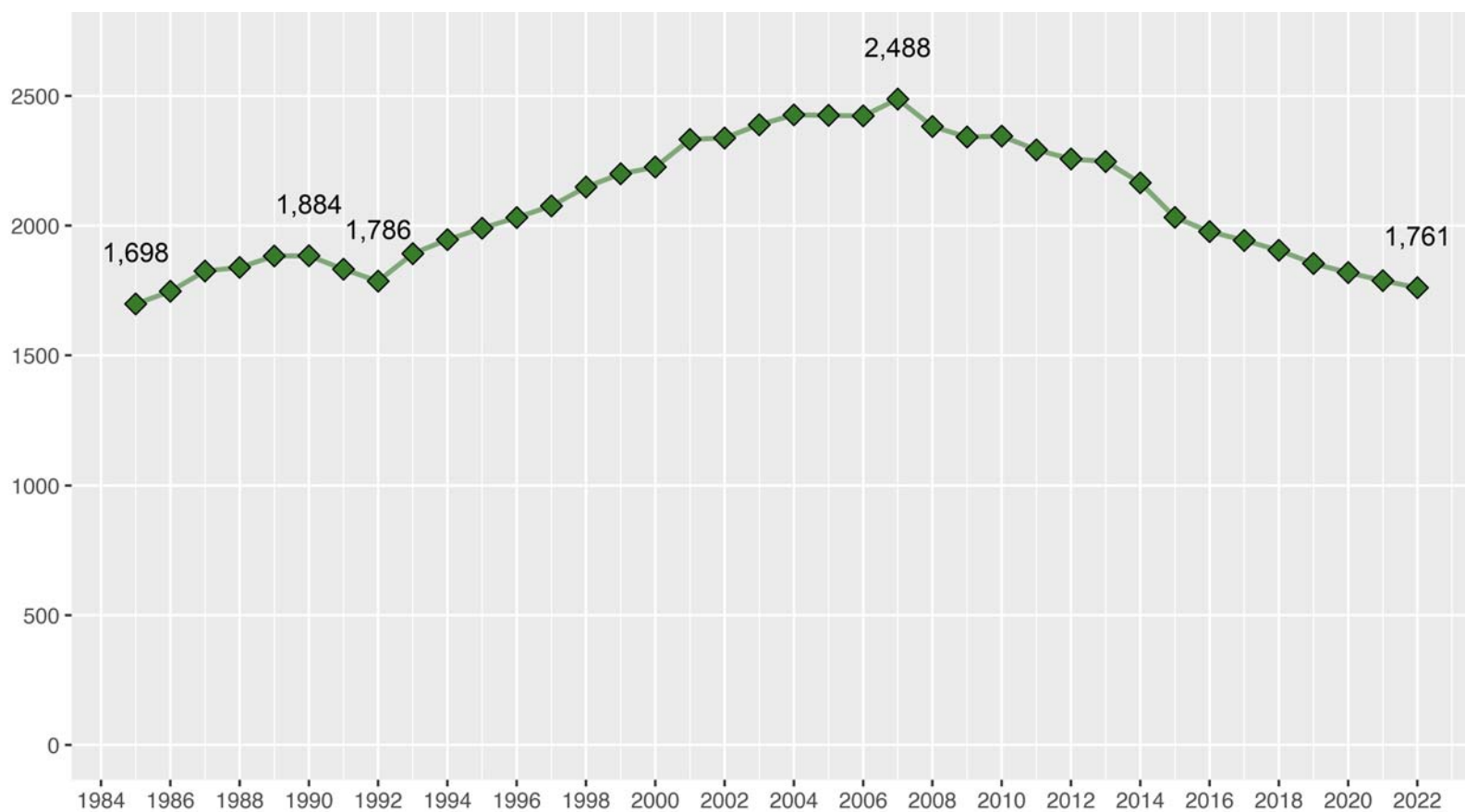
Number of Schools By Year



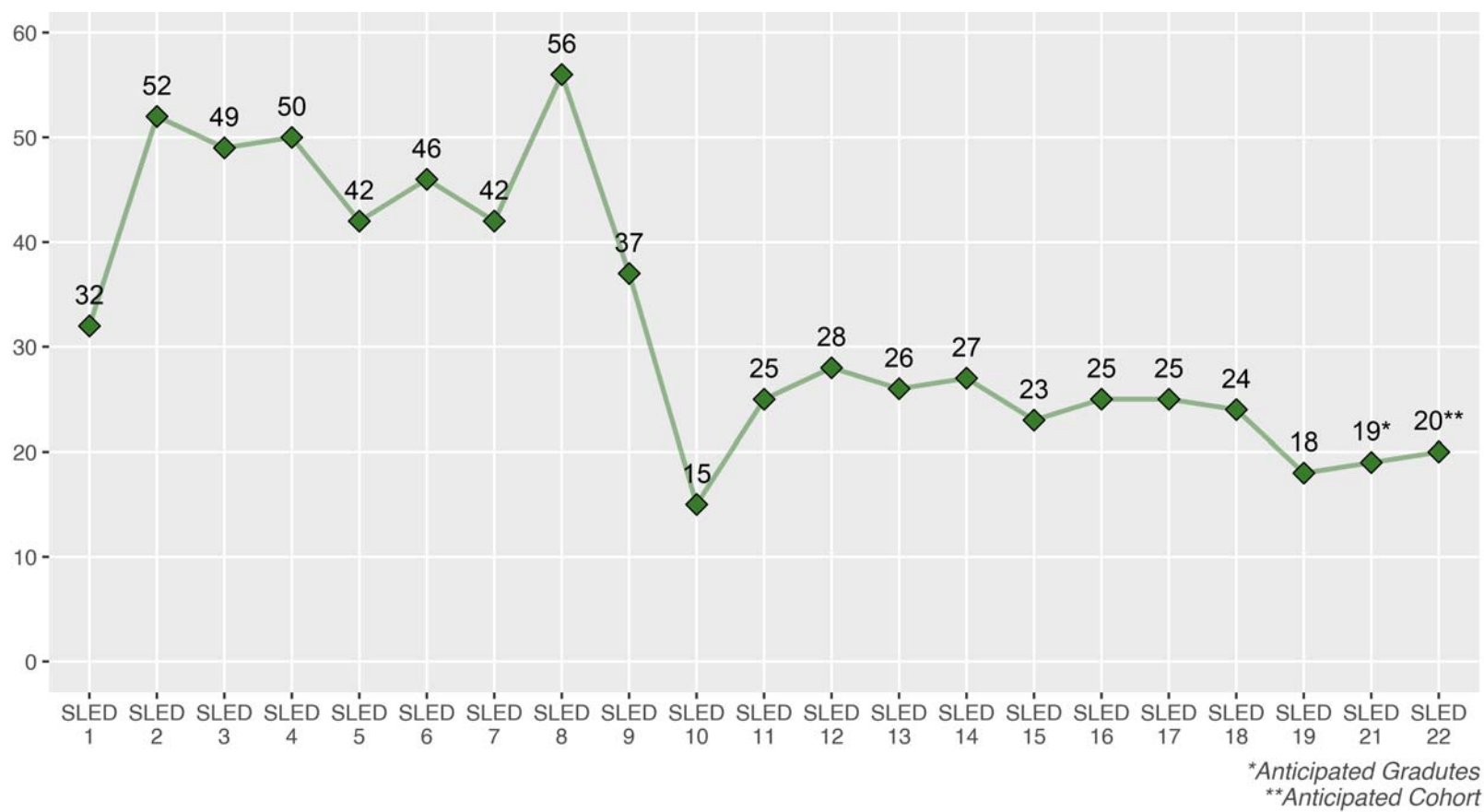
**From the 2018-2019 school year forward, school "Type" is collected by individual grade level, not by "EC, EL, or HS" groupings. As such, data related to "Schools by Type" now indicate the number of schools indicating they contain these grade levels.*

The visible decline in elementary schools in 2022, is because this total no longer classifies schools that only have a Kindergarten as "elementary" (elementary school totals in previous years included all Kindergartens, even those without higher grades).

Number of EC/EL Schools



Trend: SLED Graduates



Emeritus Changes

	2014-15	2015-16	2016-17	2017-18	2018-19	2019-20	2020-21	2021-22
Number of Emeritus Educators	2,715	2,823	3,030	3,180	3,334	3,492	3,593	3,669
Cumulative Change Since 2015		+108	+315	+465	+619	+777	+878	+954